

From Visibility to Action

How Agentic AI and Location
Intelligence Are Rewiring
Supply Chains

Quebec | 28th April 2026



We tell you how it is.
Numbers, data and facts about the company.



1995 Inception as a division
within Lufthansa Systems AG

100% equity interest
Lufthansa Group

359 million EUR
revenue in 2025*
*(38% of these are outside the LH Group)

14 locations
Headquarters in
Norderstedt near
Hamburg

Further branches in Germany,
Albania, Switzerland and the U.S.A.

3,000 employees
(Q1, 2026)*
*including all subsidiaries

300 clients

Top ranking: **best IT service
providers 2024***

*Source: brandeins | for the fifth time in a row

One of the **25** largest
IT consultancies in Germany*

*Source: Luenendonk

We're the right partner for everyone, who has something to ...



move,

repair,

manufacture.



Visibility is no longer enough to increase the efficiency in global supply chains.

Already...

35 % TMS adoption rate
63 % Planned or in implementation

56 % Adoption rate on real-time tracking

\$23 Billion
Location Intelligence Market volume 2026



Yet...

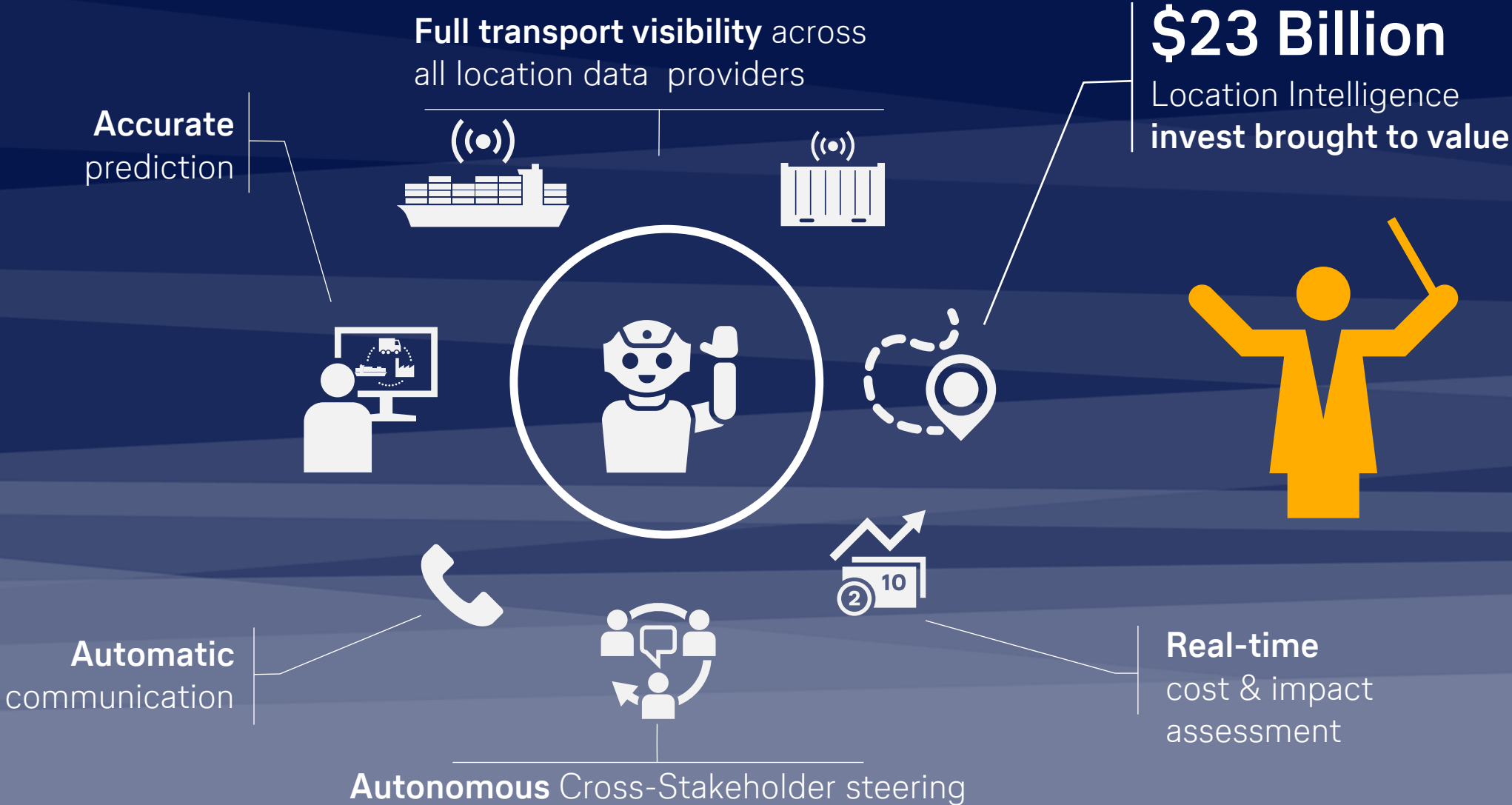
Manual, labor intense communication



Incomplete cost & impact assessment

Inefficient Cross-Stakeholder steering

We envision to orchestrate our complex supply chain reliably, autonomously and efficiently.



The Market Gap: Location Intelligence technology is in place, but the decision-making process has not changed.

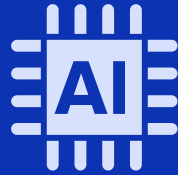
Current Generation



No AI

Manual exception handling across multiple systems & processes

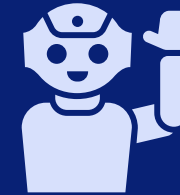
Current Generation



Predictive AI

Earlier warnings and insights but still the same manual resolution work

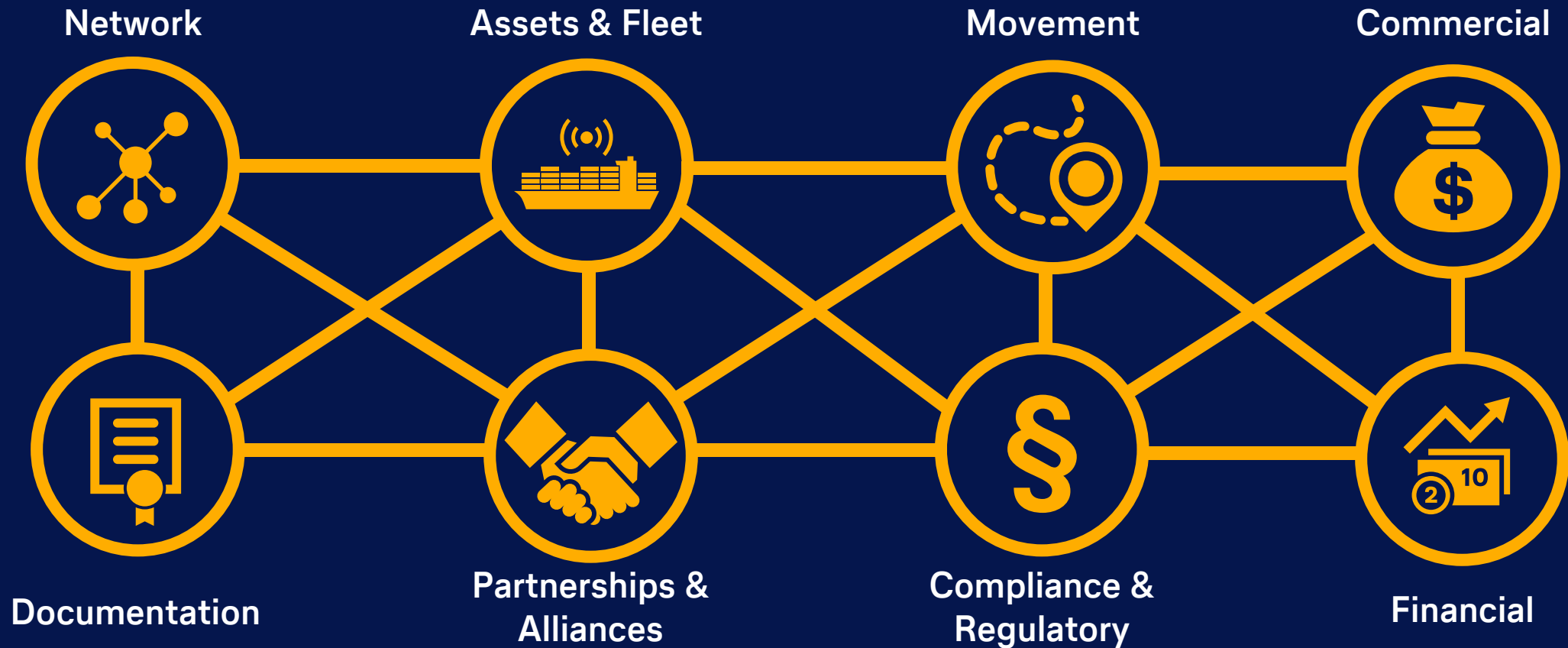
Upcoming Generation



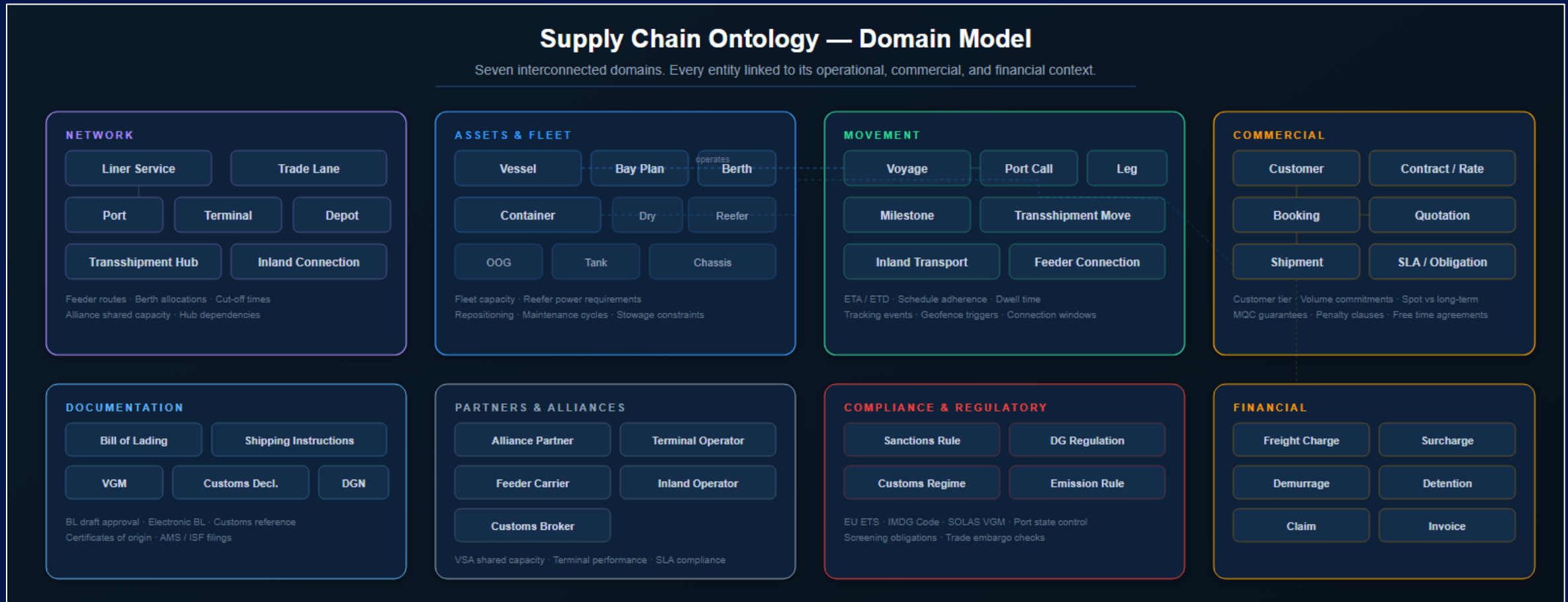
Agentic AI

Contextual reasoning, recommended actions, governed automated execution across systems & processes

Ontology: The formal representation of knowledge as a set of concepts and the relationship between those concepts.

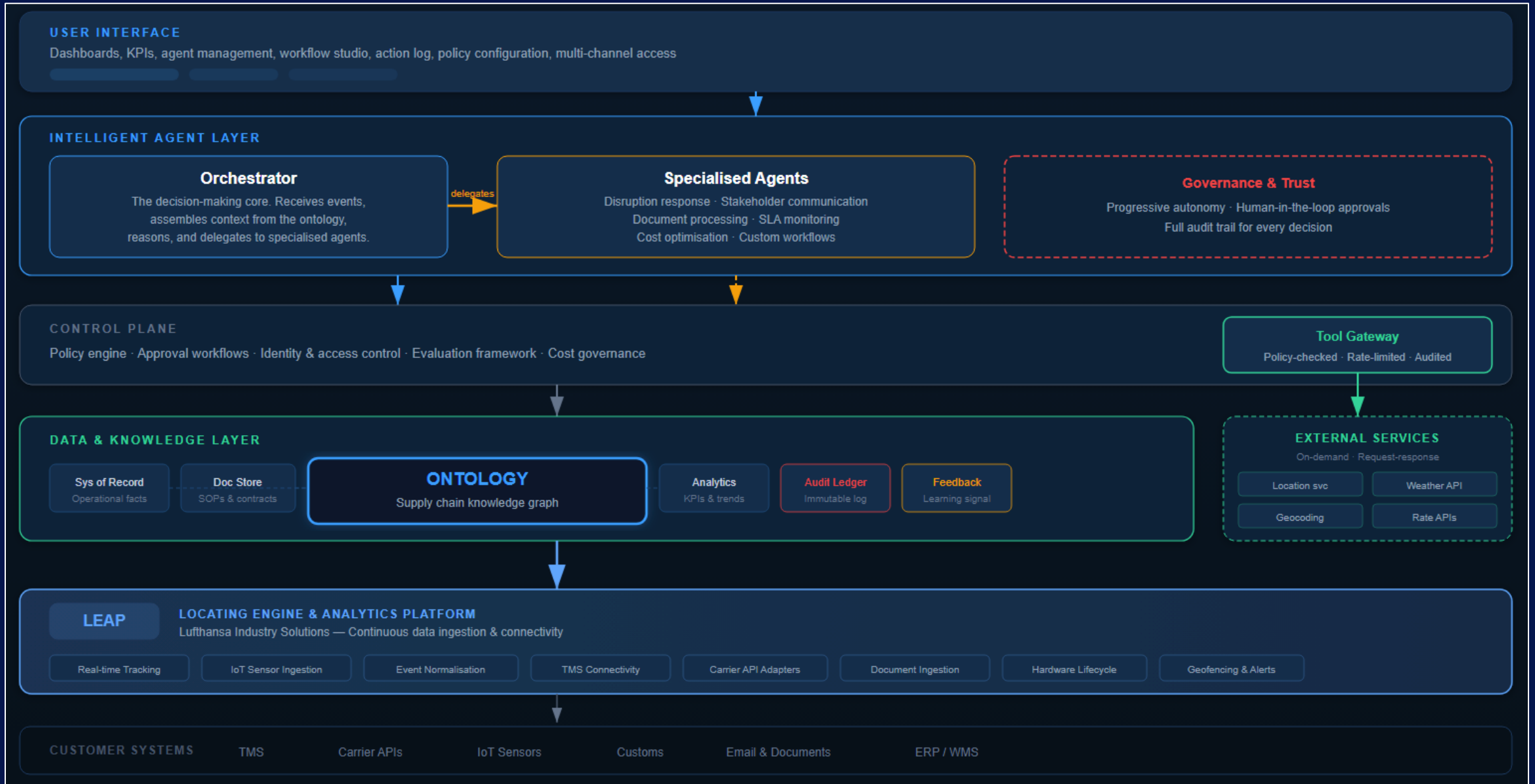


Ontology: The formal representation of knowledge as a set of concepts and the relationship between those concepts.



The ontology connects entities, relationships, obligations, and consequence paths across the supply chain.

The **Agentic AI platform** contains the Ontology at its core. AI Agents utilize the knowledge & data layer to bring the results to business.

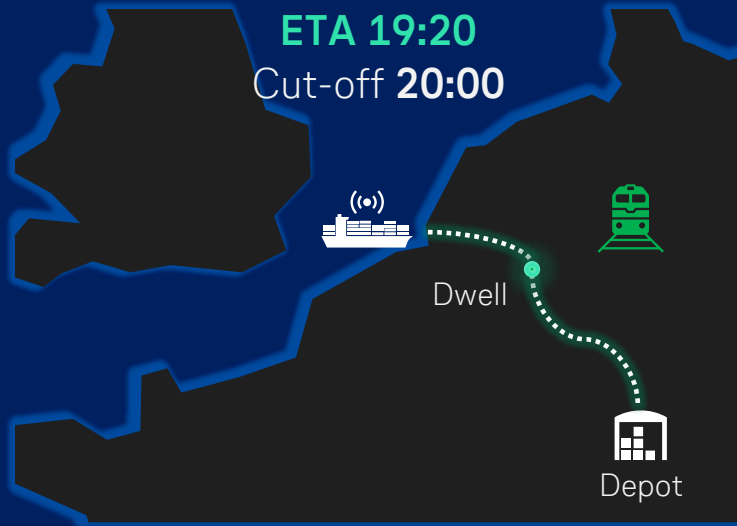


PLAN vs ACTUAL – How Agentic AI Prevent Supply Chain Delays

PLAN

Transport Plan

ETA 19:20
Cut-off 20:00



Plan is valid

ACTUAL

Reality Changes

ETA 21:45
Cut-off 20:00

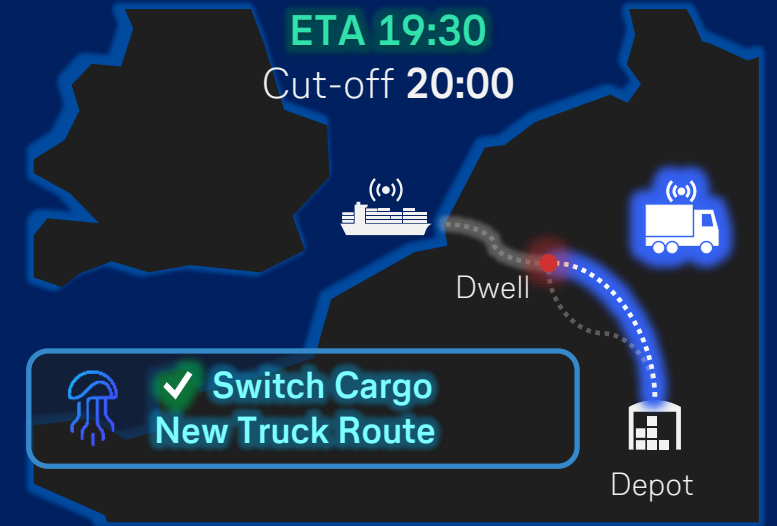


Missed the rail connection

AGENT

AI Intervenes

ETA 19:30
Cut-off 20:00



Delay prevented

Data Reliability
FOUNDATION



Predictions & Notifications
REAL-TIME



Agentic Automation
24/7 EXECUTION

Millions of Transport Plans Monitored Continuously



Live-Demo



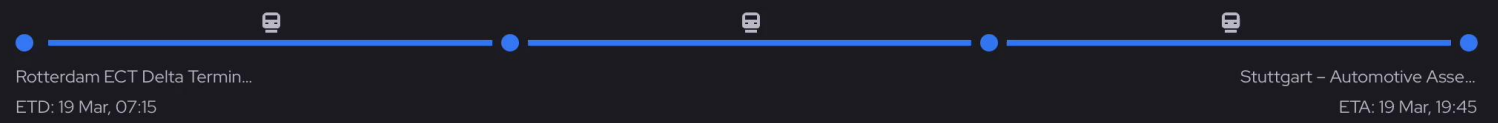
Hello – I'm your AI logistics assistant, here to keep shipments moving smoothly from origin to destination. How can I assist you today?

11:03

← Back to Shipments

Rail Disruption Recovery

Status: ongoing
ETA: 03/19/2026, 07:45 PM



Event	Tracking ID	Type	Location	Time
Departed Rotterdam ECT Delta	TRLU7654321	OUTSIDE_GEOFENCE	Rotterdam ECT Delta Terminal	19/03/2026, 07:15:00

RELATED:
Check the status of shipment SC-48291.

Ask your AI logistics assistant...

Thank **you**

Quebec | 28th April 2026

Think digital. Act digital. Together.

[LHIND.de]

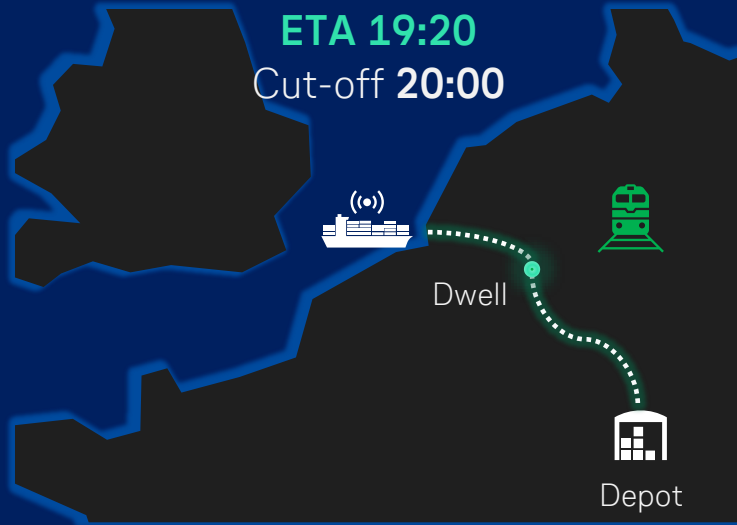


PLAN vs ACTUAL – How Agentic AI Prevent Supply Chain Delays

PLAN

Transport Plan

ETA 19:20
Cut-off 20:00

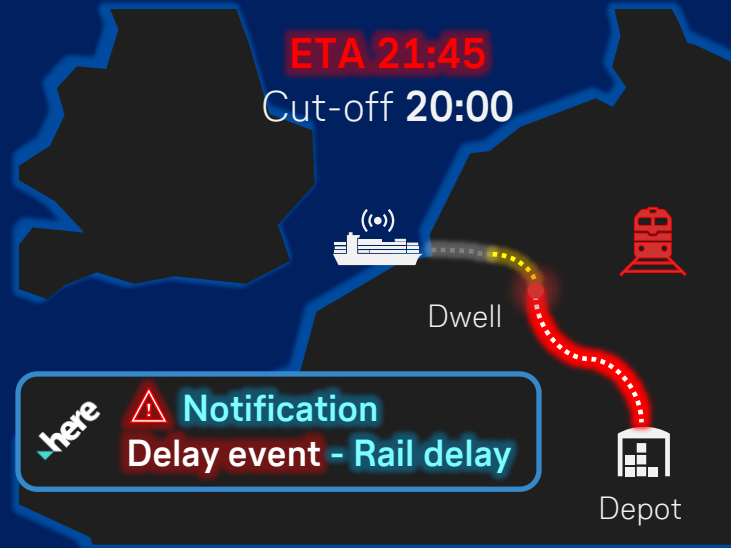


Plan is valid

ACTUAL

Reality Changes

ETA 21:45
Cut-off 20:00

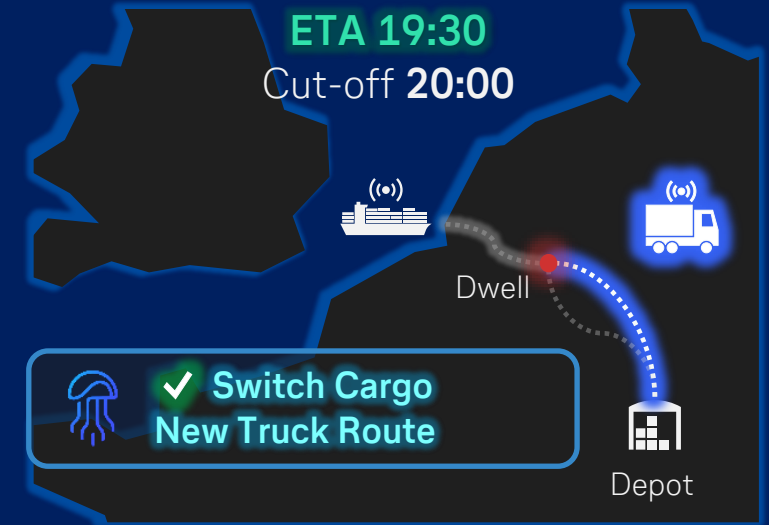


Missed the rail connection

✓ AGENT

AI Intervenes

ETA 19:30
Cut-off 20:00



Delay prevented

Data Reliability
FOUNDATION



Predictions & Notifications
REAL-TIME



Agentic Automation
24/7 EXECUTION



Millions of Transport Plans Monitored Continuously

